



New Mexico Archaeology

THE NEWSLETTER OF THE FRIENDS OF ARCHAEOLOGY

February 2011

FROM THE DIRECTOR

The 2011 New Year has been an interesting threshold. I and the other Museum division directors have served “at the pleasure of the Governor” only since the reorganization of the Department of Cultural Affairs in 2004. This has been our first experience with a change in leadership, fraught with uncertainty and anxiety along both professional and personal lines. My interview with Governor Martinez’ transition team was reassuring, but no promises were made, and it was with relief that I received my e-mail invitation to continue my work for OAS “for the time being.”

Outgoing DCA Secretary Stuart Ashman explained the situation well: the reason we directors serve at the Governor’s discretion is to keep us accountable. The value of that authority is something I can actually appreciate. Back in 1999 I served as acting director at the Museum of Indian Arts and Culture when a director violated the trust and expectations of that position. If the director had not resigned voluntarily, it would have been a bitter and drawn out civil service action. On the flip side, the legislation that established DCA includes a process for selecting directors that ensures the professionalism of the positions. I am happy that the system values both accountability and competence, and that the system has worked in its first major test.

The months ahead are rich with challenges and opportunities. OAS will be part of New Mexico’s recovery from fiscal crisis, doing both what we can and what we are called upon to do. We look forward to working with Secretary Designate Veronica Gonzales as she learns about and guides the vast network that is Cultural Affairs (and Tourism?). The Center for New Mexico Archaeology is nearly ready to emerge from its overly long gestation, and we are bold enough to plan for our “Meet the Archaeologists” event as an informal open house. The OAS staff is involved in some really exciting archaeology at Spaceport America, and we hope to work our way through a productive year.

--Eric

CENTER FOR NEW MEXICO ARCHAEOLOGY

Eric Blinman, OAS Director

So much is scheduled between the time I write this and the mailing date for the Newsletter that I’m just going to assume that it all will have happened as planned.

The power was turned on January 10, followed immediately by “punch list” inspections by the architects and engineers. We are now in the midst of a 60 day LEED commissioning period, designed to make sure that all of the systems are working efficiently and as advertised.

Temporary water is being supplied by the New Mexico National Guard as we complete the design and prepare for the installation of the permanent Santa Fe County water system. Funding for the permanent water system is a high priority in the capital outlay requests for the 2011 legislature.

An occupancy permit could be granted as early as mid-March, and we will begin moving people slowly into the building as soon as possible so that we will have a “presence.” With the bruises and strains from our last evacuation (move) seared into our collective psyche, this move will be guided by the principle of “serenity.”

Thanks to everyone who has supported and who continues to support our efforts to build and occupy the new center. We hope you will be as pleased with the final product as we are as we anticipate its completion.



Research

ARCHAEOLOGY AT SPACEPORT AMERICA

by OAS Project Directors: James L. Moore, Nancy J. Akins and Matthew J. Barbour

Located in south central New Mexico, Spaceport America is currently under construction by the New Mexico Space Authority. It is located roughly 40 miles southeast of Truth or Consequences in an area known as the *Jornada del Muerto*. When completed, it will provide space tourism and satellite launch services through a partnership with enterprises such as Virgin Galactic and their new space shuttle, the White Knight.

Between November 8 and December 17, 2010, the OAS conducted testing at eight archaeological sites that could be impacted by future development at Spaceport America. The purpose of testing was to gather information regarding the nature, extent, condition and data potential of the sites before undertaking more detailed research-driven investigations. This resulted in the collection of roughly 100 formal tools and the documentation of 154 features, most of which are thermal features.

The Jornada del Muerto, translated in English as the Journey of Dead Men, is a desolate desert and xeritic shrubland valley bordered by the Oscura and San Andres Mountains on the east; and the Fra Cristóbal Range and Caballo Mountains on the west. The area is dry and not ideal for corn agriculture. Many of the archaeological sites appear to date the Paleoindian (10,000 to 6,000 BC) and Archaic (6,000 BC to 400 AD) periods. Of great interest were four Folsom points and two late Paleoindian points that were recovered from the two largest sites, potentially indicating the presence of definable components from these periods, which are a rarity in the region. Subsistence strategies during these periods may have focused on the hunting of large and small game and the collection of native grasses and mesquite pods. No large Jornada Mogollon villages were encountered. However pottery, including El Paso Brownware and Chupadero Black-on-white, was found on two of the sites suggesting at least intermittent occupation of the area by more sedentary peoples during a time known to archaeologists as the Formative Period (400 to 1450 AD).

Proto-historic and historic Native American peoples, such as the Manso, Suma, Jumano, and Apache, also used the area. These populations survived on the landscape much as their Archaic and Paleoindian ancestors had done thousands of years before them. Several features and artifacts that were encountered may be associated with one or more of these groups. It is often difficult to distinguish these populations in the archaeological record without the presence of Euroamerican artifacts or distinctive projectile points.

Later, Spanish and Anglo-American peoples journeyed through the area, but rarely stayed for very long. Passage through the Jornada del Muerto was considered the most dangerous stretch of the *Camino Real del Tierra Adentro*, or



Spaceport America Terminal under construction

royal road, connecting Santa Fe with Central Mexico. The absence of reliable watering holes and the presence of roaming bands of nomadic Indians created a virtual “no man’s land” separating the Northern Rio Grande from the El Paso and Chihuahua regions of Northern New Spain. Pacification of the indigenous tribes by the U.S. Army in the nineteenth century opened the basin to cattle ranching. This later “Cowboy Era” is also evident in the archaeology of Spaceport America through the presence of numerous fruit and vegetable cans, lard buckets, and spent ammunition casings.

Archaeological investigations of Spaceport America are expected to continue through the spring and summer of 2011. Research will focus on dating the sites through radiocarbon samples and diagnostic artifacts, the examination of site structure (layout), trade patterns between groups living in the *Jornada del Muerto* and elsewhere, and changes in resource availability and exploitation through time. ❖



Karen Wening (foreground) and Mary Weahkee excavate a test pit.

DENDROCHRONOLOGY AND STRUCTURAL WOOD PROJECT AT EL CERRITO ON THE RÍO PECOS

Thomas C. Windes

Work at El Cerrito, a few miles downstream from Villaneuva, was started in 2008 as part of a decade-long project of architectural recording, dendrochronological sampling, and study of structural wood use in Hispanic villages along the Upper Pecos River Valley. Previous and on-going work has taken place in the Village of Pecos, San José del Vado, and San Miguel del Vado (Windes 2002, 2010), villages just off present-day I-25. With the establishment of the 1794 San Miguel land grant and the central role of San Miguel del Vado as the initial settlement center along with San José, numerous other villages were later founded as the populations grew in the del Vado villages and farming land became scarce.

BACKGROUND

By 1823, settlers from San Miguel and elsewhere had settled in El Cerrito. Today, there are few residents left, perhaps 13 or so, but El Cerrito has become one of the best documented Hispanic villages in northern New Mexico. Department of Agriculture employees Charles Loomis and Orel Leonard (1941) lived in the village in 1939 and 1940 and reported on its life as one of a handful of villages and towns across the nation studied by the U.S. government during the Great Depression. This was followed by a flurry of studies of the village, including a companion photographic essay by government photographer Irving Rusinow (1942). Later, Richard Nostrand, a student of one of the investigators at the village returned in 1979 as a geography professor at the University of Oklahoma and continued studies that have lasted through the present. Publication of his primary work on the village *El Cerrito: Eight Generations in a Spanish Village* prompted this author to establish a partnership with him to expand our knowledge of the village and to appraise the historical record of settlement at El Cerrito through tree-ring dating. El Cerrito, as with several other Pecos villages, has long been considered an initially fortified plaza settlement but recent work along the Pecos by the author using dendrochronology has disputed this. More likely, the initial Pecos settlements were primarily scattered ranchos and only began to cluster and enclose the main plazas after hostilities with the Plains Indians peaked in the mid 1800s. The wood project is also contributing to a large database on northern New Mexico Hispanic architecture, a subject that is poorly known for the smaller, residential structures.

RESULTS

The Friends of Archaeology of the Museum of New Mexico Foundation graciously provided funds to cover the tree-ring dating of our first season's work at El Cerrito (53 samples). Two structures were sampled, including the what is thought to have

been the first building (Structure 23 as numbered in Nostrand's 2003 book) constructed by the village's founder José Ramón Aarí in about 1823, who came from crowded San Miguel upstream. Parts of this structure had been torn down but the roof beams and some window lintels were still available to sample. The property also contained additional buildings, now in ruin. The owner had recovered an early complete hand-made door and framing from one of the demolished buildings but we could only make scaled drawings of it; sampling it was not allowed.

There were several intramural logs embedded in the adobe walls, which are the best bet for retrieving dates from the initial construction but none, surprisingly, dated except for a single piñon pole, which dated at 1833. This probably dates the initial construction but is without other supporting dates; it may mean that a permanent structure at El Cerrito was first built about a decade after the land was first allotted and when oral history claims the first house was built.

The four main rooms still standing yielded numerous dates that attest to the roofing being replaced in 1875. Beams



An overview of El Cerrito village by Olen Leonard in 1970

from the demolished rooms yielded a single date in 1893, but two former window lintels dated at 1844 and 1850, suggesting an earlier construction. An attached wall with a doorway (into a former room) yielded a lintel date at 1849 and a loose piece of worked wood nearby at 1853. This small batch of earlier dates indicates some construction of structures on the property in the 1850s, possibly an expansion of the original house. Thus we apparently have at least four construction or remodeling periods of the property's structures: around 1833 and 1853, then later at about 1875 and finally at about 1900. The more recent modifications have employed older timbers from previously demolished rooms on the property but luckily the owner was able to state when these occurred and the source for his reused timbers.

FOA grants

EL CERRITO (CONT'D)

The second building at the site (Structure 17), although just behind the main long east-west roomblock bordering the former plaza, was built in 1885, as all three rooms yielded similar cutting dates. The following year's work concentrated on obtaining permission from owners and sampling structures along the main east-west roomblock and a ruined building along the road entering the plaza from the river bottomlands. Although not all buildings could be sampled, we now have a large enough sample (in process) to assess the oral history for the village's proposed settlement sequence and additional evidence of Hispanic construction techniques to add to the histories of San Miguel and San Jose (see Windes 2010).

MOGOLLON ARCHAEOLOGY CONFERENCE

by Dean Wilson

We (Dean Wilson, Lupe Martinez, Jeff Cox, Mary Weahkee, and Isiah Coan) would like to thank Friends of Archaeology for supporting our attendance at the 16th Biennial Mogollon Archaeology Conference held from October 14 through 16 at New Mexico State University in Las Cruces. The efforts of Lonnie Ludeman and William Walker in organizing such a great conference are also appreciated.

The many topics discussed provided for broad and interesting perspective about archaeological research and perspectives for the Mogollon region. Many of the presentations focused on issues of organization and ideology as often viewed on a large scale. The increasing importance of world view and ideology in archaeological interpretations was the focus of sessions on "Ritual and Games," and "Sacred Spaces: Mogollon Great Kivas and Plazas", as well as referenced in talks included in almost all the sessions. A number of these alluded to the importance of ideological complexes that may have been ultimately derived from the northernmost Mexican civilizations. This theme continued to pop up in repeated discussions of ritually significant ball courts and games, the wide distribution of images, remains of macaws and parrots, patterns in the dedication and offerings in both domestic and sacred spaces, and iconography related to the Hero Twins and other narratives of apparent Meso-American origin. Examples of this focus included one presentation postulating an extremely wide religious complex thought to have emerged after 1200 AD that is reflected by the shared images in pottery from West-Central Mexico, Casa Grandes, and Pecos Pueblo; and another presentation discussed the identification of possible stone balls in otherwise non-discrete contexts scattered across the Jornada Mogollon, as evidence of the spread of ceremonial ball-games into areas not commonly associated with this complex. A number of presentations also focused on architectural expressions of ideology and ritual and included papers on integrative pit structures or great kivas during the early periods, which often contain evidence of ritual offerings or burning, as well as the later use and role of both great kivas and plazas

LEARN MORE

Finally, film-maker Robyn Herry from Texas State University worked with the wood project at El Cerrito to produce a virtual program of El Cerrito that interested readers can access (<http://elcerritoproject.blogspot.com/>) and take a virtual walk through the village. There is also filmed commentary by the author of the tree-ring study at El Cerrito (see <http://www.youtube.com/watch?v=UZWghSQbORo>). I am most grateful for the support by the villagers of El Cerrito and permission to map and sample their buildings as well as to the Friends of Archaeology for their much-needed financial support. ❖

in integrating larger communities spread across much of the Southwest.

The importance of exchange and interaction on a pan-regional scale was also noted in several presentations. Two of these discussed evidence of ceramic exchange based on the extremely large data bases that have been accumulated for INAA (Instrumental Neutron Activation Analysis) compositional analysis. One of these focused on utility wares from widely scattered Jornada Mogollon sites, and the other presented evidence relating to the production and distribution of Mimbres pottery. Both of these studies indicate the production and exchange of pottery over wide areas and multiple directions. While the data indicates that almost all locales in the Mimbres regions produced utility and decorated pottery, it is very difficult to differentiate this pottery given the similarities in manufacture, firing, and decorative techniques reflected by Mimbres Black-on-white and associated brown wares found over wide areas. Such patterns as noted in papers presented in the "Mimbres Lives and Landscapes" session may reflect social isolation and conformity associated with the spread of large villages during the Classic Mimbres period. The wide distribution of similar pottery contrasts with observations noted in presentations in the "Late Prehistory" session which described investigations from sites occupied in a number of areas after this period (post 1150 AD) where distinct ceramic and other material patterns were noted in areas earlier occupied by Classic Mimbres groups making similar pottery. Assemblages from sites dating to this period contain a high diversity of distinct decorated pottery forms associated with several traditions including El Paso Polychrome, Chupadero Black-on-white, White Mountain Red Wares, Southern Cibola White Wares, and Casas Grandes Polychrome. In one of the presentations it was noted that this change may have occurred as people initially moved away from villages into smaller and more dispersed habitations, and it was necessary to establish new connections and relationship with different groups. The new styles and connections adopted during this transition were

MOGOLLON (CONT'D)

carried over after the resumption of life in larger villages that took place during the early thirteenth century and continued until most of this region was abandoned by agricultural groups by the fifteenth century.

Other presentations focused on various aspects of subsistence including changing patterns of the procurement of obsidian, deer, and mesquite in various regions of the Mogollon. Others focused on evidence for the use of terraced fields and the influence of Medieval Warm period as reflected by local Organ III stratigraphic unit on agriculture during the Classic Mimbres period.

Two presentations focused on nomadic groups who occupied this area during the proto-historic period. One focused on the identification of ephemeral Apachean sites in the Chiricahua Mountains. The presentation in the symposium which I thought was most interesting focused on the description of poorly described nomadic groups such as the Jocomes, Janos, Sumas, Mansos, and Apaches. This presentation described projectile points recovered from a ranchera which is well documented to have been attacked by these nomadic groups in 1698. The defeat of these groups during this battle apparently contributed to their decimation, but artifacts from this site provide an opportunity to identify archaeological signatures of these poorly known peoples.

Michael Schiffer gave the invited lecture at the conference. He discussed the Great Eastern, a steam ship which was five times larger than any vessel of the day. It was designed and launched with much fanfare by famed British civil engineer I. J. Brunel. This venture, however, never was profitable and the ship was completely scrapped after one mishap after another in 1888 just thirty years after completion. Despite the fact that the Great Eastern was a complete failure, varying images of this ship continued to live on in artifacts such as trading cards and postage stamps. This serves as an example of how images can be reinvented or evolve in our consciousness through other artifacts long after the "death" of the original artifacts. Certainly, images and messages from the Mimbres, Casa Grandes, and other cultures of the Mogollon country are still alive and well, popping up again and again; still speaking to us about different histories, lessons, aesthetics, possibilities, and ways of being. ❖

For more on INAA analysis go to :
The Science Integration Research Center at Carleton College:
<http://bit.ly/bCxHnQ>

EDUCATIONAL OUTREACH AT THE FESTIVAL OF THE CRANES

Chuck Hannaford

Last November, the OAS attended the 23rd Annual Festival of the Cranes at the Bosque del Apache National Wildlife Refuge. The OAS Archaeology Outreach Program has been participating in the Festival since 1996 and this is one of our favorite annual events.

We have talked to more than 20,000 people at the festival over the years. Back in the mid-1990s, Novembers were very cold and we often experienced snow. Goose populations were plentiful because of the colder temperatures further to the north. At the bosque the ponds were rimmed with ice and waiting for the morning fly-off was agonizingly cold. We have experienced a noticeable rise in temperature at the event over the years. This was a very warm, windy, and dusty year. Dust is still spilling out of our artifact boxes. Although the geese elected to stay farther north, faithful birdwatchers are still making the pilgrimage to see their migrating birds and we talked archaeology to over 1200 people from around the world during the three day event.

We still greatly enjoy and look forward to the Annual Festival of the Cranes. ❖



ARCHAEOLOGY & WOMEN IN THE SOUTHWEST

JANUARY 21ST - FEBRUARY 18TH

FEBRUARY 4

BERTHA DUTTON: GALISTEO ARCHAEOLOGIST AND GIRL SCOUT MENTOR

*Catherine S. Fowler, Foundation Professor Emerita,
University of Nevada, Reno*

Dr. Bertha P. Dutton (1903-1994) was a well-known Santa Fe figure, having spent most of her working life as a curator at the Museum of New Mexico, a research associate at the School of American Research (now the School for Advanced Research) and later Director of the Museum of Navajo Ceremonial Art (Wheelwright Museum). She was also a pioneer in local archaeology research, especially in the Galisteo Basin where she surveyed and excavated several sites, including Pueblo Largo and Las Madres. She was equally well known for her scholarly and popular writing on New Mexico and Southwest anthropology and prehistory, and for her public outreach programs through the museums and other institutions.

One of her more unique outreach programs involved Senior Girl Scouts nationwide. From 1947 to 1957, Dutton provided a unique experience in directed learning for roughly 280 girls through her Archaeological Mobile Camps and Excavation Camps. Each summer she took from one to three camps of 12 to 16 girls on tours through the Southwest, visiting archaeological sites under excavation, Pueblo villages, Navajo homesteads, National Monuments and Parks, museums, and other points of interest. The groups traveled roughly 1200 miles per trip, camping as they went. They heard lectures along the way by pre-eminent people in archaeology, anthropology, and natural history. Some continued their interest by digging for two additional weeks at Pueblo Largo (1951-1956). Dutton devoted 11 summers to these efforts, stimulating many of the girls, most of whom kept in contact with her through the years, to go on to careers in anthropology, science, education, medicine, law, etc. She was extremely proud of them all and of the role she played in the development of these, her "daughters," who called themselves "Dutton's Dirty Diggers." The lecture will focus on Dutton's career, her Girl Scout program, and her Galisteo Basin research.

Lectures in this series will be held on Friday evenings at 6 PM, at the History Museum Theater, entered from Washington Avenue. FOA members \$13 per lecture, non-members \$16 per lecture

FEBRUARY 11

WOMEN OF SUBSTANCE: ANNA O. SHEPARD, FLORENCE H. ELLIS AND A. HELENE WARREN

Eric Blinman, OAS Director

More than half of the archaeology graduates today are women. They are following in the footsteps of greatness, in personality as well as contribution. The penultimate lecture is by Eric Blinman, highlighting the fascinating and productive careers of Anna Shepard, Florence Ellis, and Helene Warren. Anna Shepard was introduced to archaeology by Edgar Lee Hewett when she was taking college classes in San Diego. After working with Mimbres archaeology and pottery under Wesley Bradfield at Cameron Creek, she enrolled at UNM under Hewett. He eventually rejected her third attempt to define a thesis topic, and she left the university to begin an independent career that resulted in her becoming the preeminent ceramist in the Americas. Florence Ellis entered archaeology under Byron Cummings at the University of Arizona. After taking a year's furlough from teaching at Arizona to complete her Ph.D. at the University of Chicago, a miscommunication resulted in her signing a teaching contract with Hewett at the University of New Mexico. Ellis combined pottery studies and ethnology to build a productive career, influencing directly or indirectly a number of OAS staff members. Helene Warren entered archaeology through geology. She enrolled in geology at UNM and worked her way through college as a Harvey Girl. Marriage and family carried her through a variety of non-scientific jobs, culminating in a role developing the State Personnel Office here in Santa Fe. After a layoff in 1964, Warren joined the Laboratory of Anthropology as a volunteer and quickly became a paid staff member. This led to a remarkably energetic career lending a geological perspective to the analyses of both pottery and stone tools.

FEBRUARY 18

WE CAN DO IT! WOMEN, GENDER, AND FEMINISM IN ARCHAEOLOGY

*Kelley Hays-Gilpin, Department of Anthropology, Northern
Arizona University*

In the final lecture of the series, Dr. Kelley Hays-Gilpin bridges the subjects of "women as archaeologists" to the subject of "women in prehistory." She leads us through the experiences of the "founding mothers of Southwest archaeology" into the integration of feminism as part of archaeological theory and practice and the conscious attention to gender roles as part of our investigation of the past. Sensitivity to women's roles in today's culture has opened the door to explicit study of how gender roles were expressed in the past.

SOUTHERN ARIZONA – HOHOKAM & SAN PEDRO VALLEY MARCH 25-28, 2011

Our Southern Arizona field trip will focus on evidence for migrations into Southern Arizona by Anasazi and various other cultures in the Lower San Pedro Valley, as well as the Hohokam in the region near Tucson. Our archaeology guides are leading experts in their fields, Jeffrey J. Clark, archaeologist with the Center for Desert Archaeology, and Paul and Suzanne Fish of the University of Arizona. Participants may wish to fly or drive to Tucson, where vans will pick them up daily at the Hampton Inn North Tucson. The tour will begin 6 PM Friday, March 25, with dinner and discussions with our tour guides at a nearby restaurant, Las Cazuelitas.

The Lower San Pedro Valley, located east of Tucson, stretches from Benson, AZ, north to the river's confluence with the Gila. The valley is a beautiful, narrow fertile ribbon flanked by high mountains and is the locus of numerous important human migrations. We will see and learn about ball courts dating to 800 AD. Later came immigrations from the Safford Basin and Mogollon Highlands, as well as Kayenta/Tusayan peoples, relatives of the Hopi, moving from the north. We will see interesting sites such as Reeves ruin and Davis ranch, which show how these people built on the steep cliffs overlooking the river. We will visit the Amerind Foundation at Dragoon, and view their archives which house an impressive collection of ceramics from the San Pedro Valley.

Another day will be devoted to study of the Hohokam, a people who experienced a decline in population of about 75% after 1400 AD. We plan to visit sites at Tumamoc Hill, with early agricultural and ceramic villages on an iconic hill; Los Morteros, a Preclassic ball-court village in the northern Tucson Basin, Marana Community, University Ruin, and Picture Rocks. As background, the Center for Desert Archeology and other Arizona archaeologists have studied the amazing ebb and flow of peoples from within a region from the Colorado Plateau to the Sonoran desert, and their findings will be discussed.

We will visit San Xavier De Bac mission Monday morning, after which our vans will take us to the Tohono O'odham village at Sells, where we have lunch at the Desert Rain Café, known for traditional foods. In Sells, we will meet with Bernard Siquieros at Tohono O'odham Nation Cultural Center and Museum for an overview of O'odham culture.❖

Trip Rating

Moderate.

The majority of the trip will be moderate. The hike into Davis Ranch will be steep and potentially hot. This hike is optional and participants should be in good physical health should they decide to participate.

Reserve your place:

Cost for the trip is \$485, which covers guide and tour leader expenses, the Friday dinner, and lunches each day. Call 505-982-7799, extension 5, to reserve.

MNMF PARTNERS WITH TICKETS SANTA FE

The Museum of New Mexico Foundation recently entered into a new partnership with Tickets Santa Fe, the nonprofit community box office created in 2005 to provide Santa Fe and the surrounding region with box office services. This arrangement will allow MNMF members to purchase tickets for museum and special events directly through the city's centralized box office, providing 24/7 ticketing access and secure online ticket sales. Centralized ticketing will allow us to better reach and serve members with professional and safe services while streamlining internal accounting functions. Service charges do apply at all points of purchase. These ticketing fees vary when purchased over the phone or online. Tickets may be purchased in person at The Lensic (211 W. San Francisco Street) or the Santa Fe Community Convention Center for a service fee of just \$1 per ticket.

You can view upcoming MNMF events and buy tickets at www.ticketssantafe.org. Tickets Santa Fe represents more than 600 events and sells over 130,000 tickets each year. If you have questions or problems purchasing tickets for any of our events, please call the Membership Office at 505-982-6366, ext. 100, or email us at membership@museumfoundation.org.

FORTS AND BATTLEFIELDS: A LOOK AT THE CIVIL WAR IN NEW MEXICO

Trip Coordinators: Matthew J. Barbour and Robert Mizerak

Confederate forces struck at New Mexico on July 25, 1861, when Confederate Lieutenant Colonel John Baylor invaded from El Paso quickly capturing Mesilla and proclaiming it the capital of the Confederate State of Arizona. In response, the volunteer 1st and 2nd New Mexico Infantry mustered at Fort Marcy immediately left Santa Fe under the command of Colonel Edward Canby to take up positions at Fort Craig to prepare for the coming Confederate invasion. There, on February 20 and 21, 1862, Union and Confederate forces clashed in the battle of Valverde which resulted in the Confederate capture of six Union artillery pieces and a full scale retreat of Federal armed forces.

Now led by Brigadier General Henry Sibley, the Confederate force continued to march north quickly capturing Albuquerque and Santa Fe. The conquest of New Mexico was part of elaborate scheme planned by Sibley to bring the Confederacy much need supplies and natural resources. Far from simply conquering New Mexico Territory, Sibley believed that after the defeat of Federal forces stationed at Fort Union, he would quickly capture the Colorado gold fields, convince Mormon sympathizers in Utah to join the Confederate cause, and march on California.

These dreams were short lived. East of Santa Fe, the Union Army clashed again with Sibley's force, this time under the command of Colonel John P. Slough, on the 26th and 28th of March at the battles of Apache Canyon and Glorieta Pass. After destruction of Confederate supply trains by Major John Chivington, Confederate troops were forced to retreat southward never to threaten New Mexico again.



General Henry Sibley

THIS SPRING, THE FOA INVITES YOU TO EXPERIENCE THE CIVIL WAR IN NEW MEXICO WITH THREE FANTASTIC EVENTS:

APRIL 22

“The Civil War in New Mexico” an informal presentation on the history and legacy of the Civil War in New Mexico by author James McBride. This lecture will discuss the events leading up to the invasion of New Mexico, goals of the opposing forces and the after effects of the conflict on New Mexico and the United States as a whole. Mr. McBride received a Master of Arts degree in History from the University of New Mexico in 1996. He has written several books including *INTERINED*, Internment of the SS Columbus Crew at Fort Stanton, New Mexico (1941-1945) in 2003 and *Fort Stanton Marine Hospital, Public Health Service (1899-1953)* in 2005.

*Attendance limited to 35 people, FOA Members \$10, Non-Members \$15.**

**Venue to be announced via the OAS Website: www.nmarchaeology.org and the FOA Website: www.museumfoundation.org/foa.html.*

MAY 7

Guided archaeological tour of cultural resources at Pecos National Monument. This tour includes interpretative walks through Pecos Pueblo, Forked Lightning Ruin and the Glorieta Battlefield. Attendees will also receive a copy of *Bioarchaeology on a Battlefield: The Abortive Confederate Campaign in New Mexico* by Douglas W. Owsley.

Attendance limited to 20 people, FOA Members \$45, Non-Members \$55.

MAY 21

Guided archaeological tour of the Socorro area. This tour includes an interpretative walk through Fort Craig, a discussion of the Valverde Battle and a visit to an otherwise inaccessible Piro village. Lunch will be provided.

Attendance limited to 20 people, FOA Members \$85, Non-Members \$95.

PURCHASE TICKETS TO ALL THREE EVENTS TOGETHER!
FOA Members \$120, Non-Members \$145. To make reservations please call 982-7799 ext 5 after 12 AM on March 28.

CHILES AND SHERDS 2011

PUEBLO LARGO AT SAN CRISTOBAL RANCH JUNE 5TH, 2011

GREAT NEWS! Chiles and Sherds returns to San Cristobal Ranch on June 5th. Join FOA and friends for good food in a beautiful setting and take a walking tour of Pueblo Largo, one of the premier Ancestral Puebloan sites in the Galisteo Basin.

Pueblo Largo, which does not have rock art, is one of the seven big Galisteo Basin pueblos made famous by Nels Nelson's pioneering excavations in 1912. More excavations were conducted in the 1950s and 60s by Bertha Dutton and her girl scouts, the subject of the February 4th FOA lecture by Dr. Catherine Fowler. While all the Galisteo pueblos are in beautiful locations, Pueblo Largo is arguably the most stunning, on top of a high ridge overlooking much of the basin. The roomblocks and plazas will be reached by a 1.5 mile roundtrip walk from the parking and lunch area through open meadows and piñon-juniper woodland, with interpretive stations within the site. Look for more information on this spectacular and rarely visited site and the event in the May 2011 FOA Newsletter.



Call the Lentic Box Office, 438-0287, to purchase tickets for the event. When making a reservation specify if you want to join one of the before or after lunch walking tours of the Pueblo. The cost per person is \$90, a \$5 reduction from previous years to partially offset the ticket processing charges. Invitations will be sent out and look for more information in the FOA May 2011 newsletter.



Illustration by Dave Brewer

KNAPPING WITH DAVE

Chipping Obsidian / Glass Arrowheads

Dave Brewer has offered to host a flintknapping workshop. The sessions will involve a two hour class on a one time basis, starting this April. Dave is willing to teach up to 5 people at a time, whether they are beginners or people who just want to have a reason to brush up on skills from many years ago. Tools, materials, and bandages will be available at the workshops. Costs of materials will be covered by a fee of \$40 for FOA members and \$50 for nonmembers. Any funds left over from the workshops will be donated to FOA.

To enroll or get additional information about dates and times, call Dave Brewer, Instructor, at 984-2130 or email: dave@nonobaddog.net ❖

Field Trip Report

EXPLORING ZUNI PUEBLO & SURROUNDINGS

Richard T. Hasbrouck, FOA Coordinator

Although runners had most likely brought word that a very large party was approaching their village, the Zuni people must have been overwhelmed by what they saw. Across the distant plain came thirteen hundred men, many with “shining bodies and four legs.” These Spanish troops on horseback, their armor gleaming in the sun, were accompanied by a thousand Indians—former Aztec warriors. When attacked, the Zunis valiantly shot arrows and hurled the stones of their pueblo walls down on the invaders. Coronado, the Spanish leader, was twice knocked down. After dark on the night of July 7, 1540, the Zunis slipped away into the night. This was a day that ushered in centuries of European domination and attempted elimination of the continent’s native people.

On a sunny October afternoon in 2010, as our FOA group stood on the remains of that ancient Zuni village—Hawikku—one could imagine that long-ago and fateful scene. Today this remote and historic “first encounter” site, which predates Plymouth Rock by 80 years, remains nearly buried and essentially unknown.

Our FOA adventure began with a Wednesday evening dinner in Gallup followed by a most interesting talk given by Martin Link, whose extensive archaeological work has included Zuni. Thursday our Zuni Tourism guide took us in the home of traditional Zuni potters Milford and Randy Nahohai. They explained their techniques and the traditions incorporated in their beautiful pieces. Lunch, a traditional Zuni meal, was served in a Shalako house. These homes are uniquely designed for use in early December during the Zuni’s annual and most important ceremony, Shalako. Entrance is by invitation only.

Our afternoon tour began with a visit to the Old Zuni Mission, located in the Middle Village. Beginning in 1970, in conjunction with the mission restoration project, Zuni artist Alex Seowtewa painted the interior walls with a number of larger than-life Kachina figures. The artist’s son Ken Seowtewa, who along with his brother assisted with the painting, explained the significance of the various figures. Leaving the Mission, we took a guided walking tour of the Middle Village and visited the museum.

Friday morning we drove to Hawikku, probably the largest of the fabled “Seven Cities of Cibola (high clearance

vehicle required). Tom Kennedy, Zuni Tourism Director and our guide for the day, explained the history and layout of the site. As might be expected there were innumerable pottery sherds to be seen (and not taken!). Following a quick picnic lunch we drove, then hiked a short distance, to the “Village of the Great Kivas.” The construction is attributed to the (northern) Chacoan and later the (southern) Mogollon cultures. A bit of a scramble took us above the kivas to a cliff wall containing a number of old petroglyphs and some more recent pictographs.

Saturday morning we drove to El Morro National Monument. There Historical Archaeologist Matthew Barbour (NM Office of Archaeological Studies) guided us around Inscription Rock and up to Atsinna, an early Zuni site—thought to be the furthest east that the Zuni settled. Lunch was at the Ancient Way Café a short distance east of El Morro—definitely a “must visit” eatery! Our tour concluded with a visit to the Casamero site, a Chaco outlier (Chaco Canyon being about 60 miles to the North). Again Matthew provided an excellent overview of the site. ❖



Photo: Old Zuni Mission by Richard T. Hasbrouck

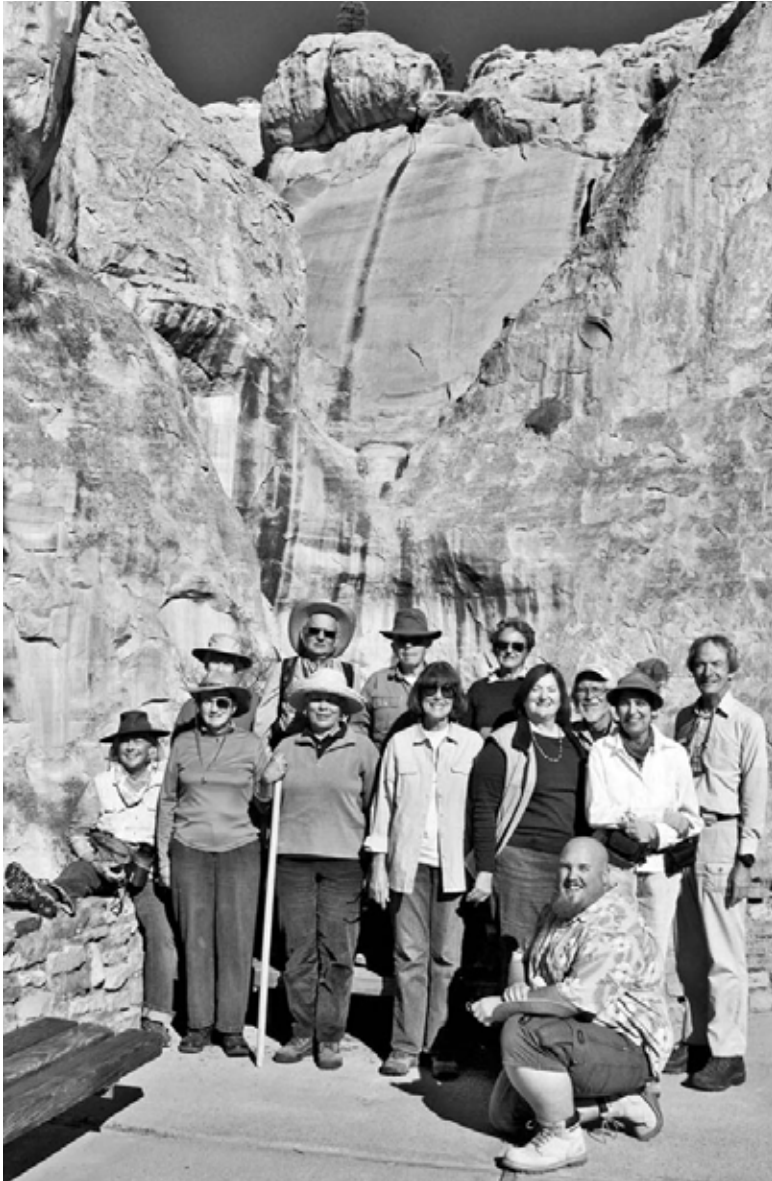


Photo: Group at El Morro by Richard T. Hasbrouck



Photo: Corn Mesa Richard T. Hasbrouck

Office of Archaeological Studies

The Office of Archaeological Studies (OAS) was the first museum program of its kind in the United States. Its staff conducts international field and laboratory research, offers educational opportunities for school groups and civic organizations and works to preserve, protect and interpret New Mexico's prehistoric and historic sites.

If you would like to know more about OAS, please see our Weblink:
www.nmarchaeology.org

Friends of Archaeology

The Friends of Archaeology is a support group of the Museum of New Mexico Foundation for the Museum of New Mexico, Office of Archaeological Studies.

Mission Statement

The mission of the Friends of Archaeology is to support the Office of Archaeological Studies in the achievement of its archaeological services mandate from the state of New Mexico by participation in and funding of research and education.

Friends of Archaeology Board

Officers

Chair: Rotating
Treasurer: John Karon
Secretary: Tim Maxwell

Board Members

Charmay Allred
Sid Barteau
Richard Blake
Joyce Blalock
Paula Dransfield
Penny Gómez
Franklin Hunt
Kathleen McRee
Ann Noble
Don Pierce
MaryAnne Sanborn
Richard Schmeal (activities)
Eric Blinman (OAS Director)

UPCOMING FRIENDS OF ARCHAEOLOGY EVENTS

- Feb 4th. Archaeology and Women in the Southwest: Dr. Catherine S. Fowler
Feb 11th. Archaeology and Women in the Southwest: Eric Blinman
Feb 18th. Archaeology and Women in the Southwest: Dr. Kelley Hays-Gilpin
Mar 25-28. Field trip: Hohokam, San Pedro Valley, Southern Arizona
April 22nd. Civil ware in New Mexico talk: James McBride
May 7th. Glorieta Battlefield Field Trip
May 21st. Fort Craig and Piro Village Field Trip
June 5th. Chilies & Sherds IX
Sept 16-18th. Acoma/Malpais Trip

2011

FOA NEEDS VOLUNTEERS

to work our two Reservation Hotlines. These Hotlines and the volunteers who answer them are essential for FOA trips and other event reservations. Checking recorded messages and responding to them by returning calls is a relatively painless task that you as a Hotline volunteer can do from your own home on your own schedule. Please contact Jessica Badner at jessica.badner@state.nm.us. Training will be provided!

Group at Hawikku by Richard T. Hasbrouck

